

COUNTER FIRE DOORS

L-STEEL COUNTER FIRE DOORS SL-STAINLESS STEEL COUNTER FIRE DOORS

R&S Counter Fire Doors integrate the automatic fire protection of a Rolling Fire Door with the compact design and neat appearance of a Counter Door. They are available in Primed Steel or Stainless Steel and have most of the same options as Fire Doors. Warnock Hersey Label is furnished standard.

SPECIFICATIONS

Warranty:

Two years or 12,500 cycles

Mounting:

Face of wall or between-jamb

Operation:

Push-up to 12' wide and awning crank on larger sizes is standard (awning crank should be considered when doors are to be operated over a deep counter of over 7' high). Chain hoist or motor operation are optional.

Automatic Closing:

Thermally activated by 165° fusible links, with the closing speed regulated by a governor device operative only during automatic closing.

Curtain:

Interlocking type 17 flat slats are roll formed from (galvanized steel) (stainless steel – 12' max. width) coil. Gauge of slats is as required by the listing.

Bottom Bar:

Single steel angle footpiece with slotted assembly holes and fiber washers allow for expansion to meet listing.

Guides:

Box shape guides are formed from (steel) (stainless steel). Slotted assembly holes and fiber washers allow for expansion. Depth of guides are as required by the listing.

Brackets:

Steel plate brackets are bolted to guides to support curtain and barrel and provide mounting for hood.

Barrel:

Steel pipe houses torsion spring assembly and supports curtain with a maximum deflection of .03 inch per foot of width. Torsion springs are mounted on a continuous cold rolled steel shaft, adjustable by a tension wheel outside one bracket.

Hood:

Square hood formed from 24 gauge (galvanized steel) (stainless steel) sheet, reinforced with top and bottom flanges to limit deflection.

Locking:

Slide Bolt locks standard for push-up operation, optional otherwise.

Finish:

Galvanized steel slats and hoods are pre-finished with a baked on gray polyester primer before forming (Tan or bare available upon request). Steel footpiece, guides and brackets receive one coat of rust inhibiting color matching primer. Exposed stainless steel provided with #4 finish.

OPTIONS

Grifco or FDCL:

Grifco Fire Door Chain Hoist and Liftmaster FDCL Fire Door Motor, provide smooth automatic closing without tension loss, saving time and money on testing and resetting.

LiftMaster Release Devices

Smoke Detectors: Photoelectric (detects smoke and heat) require connection to a release device (XPBB) or FDC Operator.

Perimeter Gasketing:

Brush seals factory applied to guides and footpiece, field installed on header, to aid in smoke and draft control.

Cylinder Locks:

Key or thumbturn cylinder lock installed on footpiece for added security and convenience.

Powder Coat Finish:

Available on all exposed surfaces.

Galvanized Finish:

Hot dip Galvanizing available on footpiece, guides and brackets.

WARNOCK HERSEY LABEL

Hourly Rating

1 1/2 Hour Sheetrock/ 3 Hour Masonry

Wall Construction

Drywall or Masonry

Jamb Type

16 ga. (min) Steel Stud | Steel Tube, Wood Stud | Concrete, Block Brick

Label size

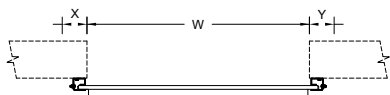
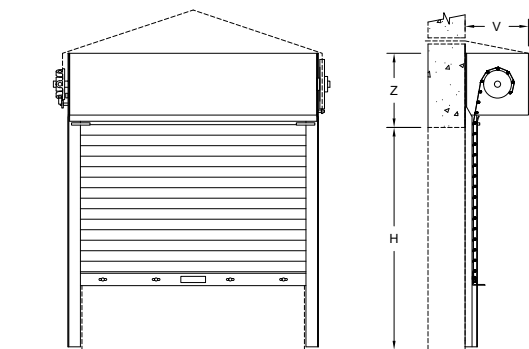
12' Wide | 9' High | 72 Sq. Ft. Max

Oversize

15' Wide | 10' High | 96 Sq. Ft. Max.

Jambs must be continuous members from floor to structure above. Sizes and attachment of members is to be determined to provide adequate mounting and support for the size and weight of the door.

STANDARD CLEARANCE REQUIREMENTS

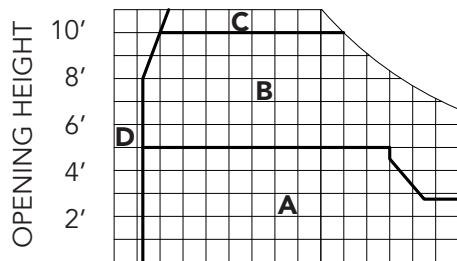


Area	Z"	V"
A	12	10 1/2
B	14	12 1/2
C	15	13 1/2
D	Consult Factory	

1. Additional clearance may be required when brackets mount above ceiling
2. Crank bracket extends 5" past 'V' dimensions

Opening width 'W'	X"	Y"
Thru 8'	4 1/4	4 1/4
Over 8' Thru 15'	5 1/8	5 1/8

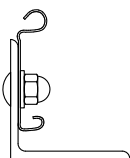
1. Add 1" to 'Y' for crank operation
2. Add 3/4" to 'X' and 'Y' for doors thru 8'0" wide face mount to masonry jambs
3. Reduce 'X' and 'Y' by 1/4" for Between-Jamb Mount R/H chain operation as shown reverse 'X' and 'Y' for L/H



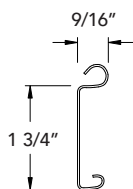
THRU 2' 4' 6' 8' 10' 12' 14'

OPENING WIDTH

CURTAIN DETAILS

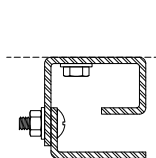


Single Angle Footpiece

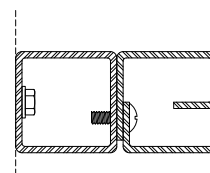


#17 Slat

GUIDE DETAILS



Face Mount



Between-Jamb Mount

AVAILABLE FINISHES

Standard



Slats, Hood, Steel Footpiece, Guides & Brackets
Gray

Optional



Slats & Hoods
Tan & White Polyester Primer



Footpiece, Guides, & Brackets
Hot-Dip Galvanizing, Tan, or White



Available on all exposed surfaces in a variety of colors
Powder Coat

Fire doors are to be installed by an R & S authorized representative in accordance with R & S installation instructions and NFPA 80. Fire doors are to be drop tested and witnessed for proper operation and full closure after installation. NFPA-80 and model code groups mandate annual inspection and testing of fire doors to check for proper operation and full closure.